

MONTHLY MEMBERSHIP PROGRESS REPORT

LOCATION VIRGINIA

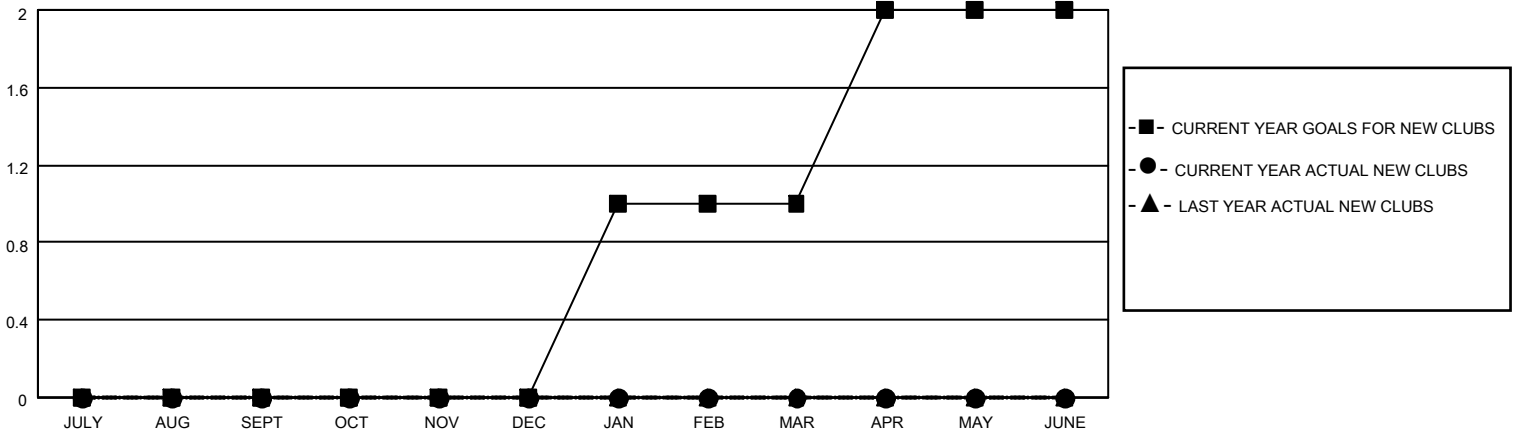
District 24 C

Results as of: 4/30/2023

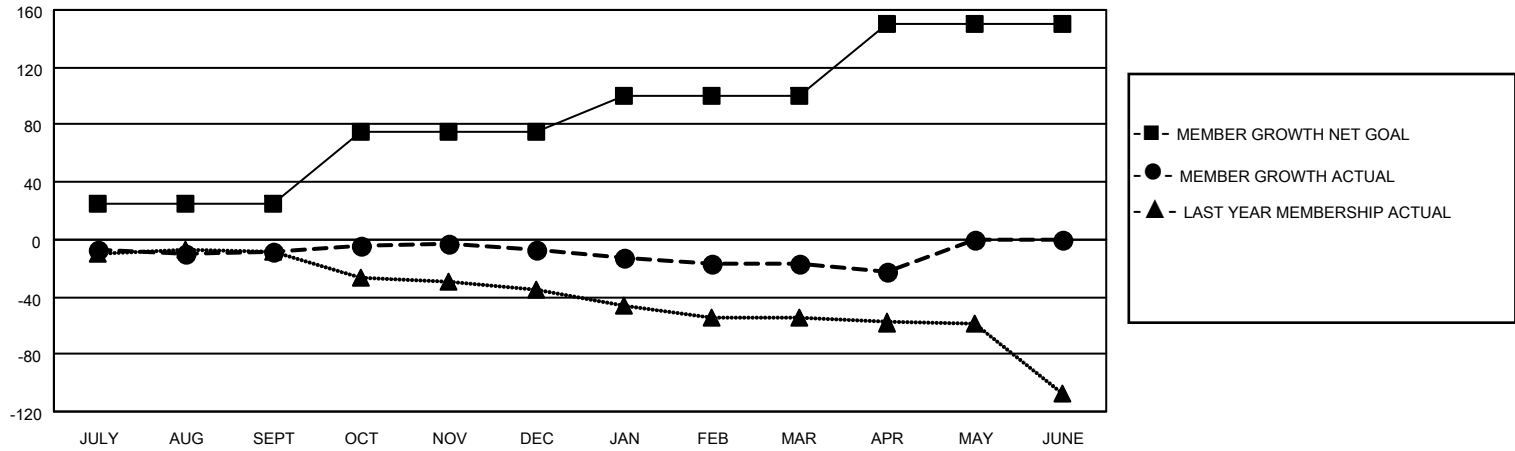
Clubs			
RESULTS FOR 2022-2023			
QUARTER	NEW CLUB GOAL	NEW CLUBS	DROPPED CLUBS
JULY/AUG/SEPT	0	0	0
OCT/NOV/DEC	0	0	1
JAN/FEB/MAR	1	0	0
APR/MAY/JUNE	1	0	0

Members			
RESULTS FOR 2022-2023			
QUARTER	MEMBER GROWTH NET GOAL	MEMBER GROWTH ACTUAL	DROPPED MEMBERS ACTUAL (including transfers)
JULY/AUG/SEPT	25	29	33
OCT/NOV/DEC	50	24	23
JAN/FEB/MAR	25	35	40
APR/MAY/JUNE	50	14	16

GOALS AND ACTUAL NEW CLUBS CUMULATIVE



GOALS AND ACTUAL MEMBERS CUMULATIVE



DROPPED CLUBS: 1

34 CLUBS OF 56 ADDED 1 OR MORE NEW MEMBERS

GENDER DISTRIBUTION

MALE	818 (64.56%)
FEMALE	449 (35.44%)
NON BINARY	0 (0.00%)
PREFER NOT TO ANSWER	0 (0.00%)

DROPPED MEMBERS

[CLICK HERE FOR CUMULATIVE MEMBERSHIP DATA](#)

DECEASED	27
CLUB CANCELLED	2
OTHER	83
TOTAL	112

TOTAL FAMILY UNIT MEMBERS	227
FAMILY MEMBERS PAYING HALF DUES	114